

# Statement GHG Scope 1 & 2

Base Year 2024



**mokveld**

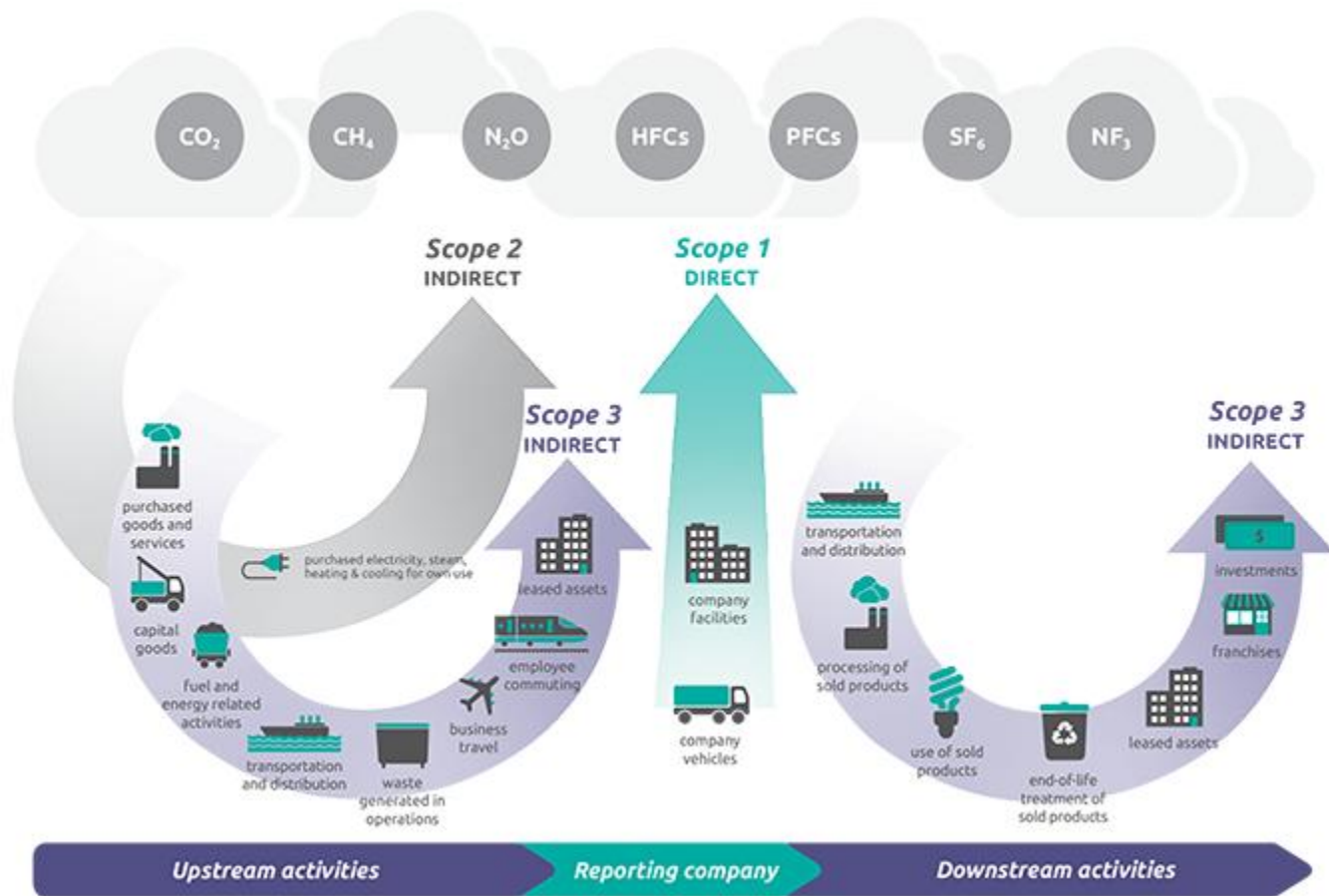
engineered valve systems

# Methodology, standards used GHG protocol

The calculation of energy consumption and associated CO<sub>2</sub>e emissions is based on multiplying organizational activity data by standardized emission factors (EFs).

These EFs represent the amount of GHG emitted per unit of activity and are sourced from trusted databases like Climatiq and the IPCC.

Scope of consolidation:  
Mokveld Holding BV,  
including production sites  
Gouda & Malaysia and all  
other worldwide sales- &  
maintenance offices.



## Gross Scope 1 GHG emissions – Base Year 2024

- Mobile emissions (persons)	65.000 liters fuel	141 t CO2 eq
- Mobile emissions (products)	27.000 liters fuel	72 t CO2 eq
- Stationary emissions (heating)	89.000 m3 gas	<u>174 t CO2 eq</u>
		387 t CO2 eq

## Gross Scope 2 GHG emissions – Base Year 2024

- Purchased electricity for own use	2.176.000 kWh	624 t CO2 eq
-------------------------------------	---------------	--------------

**Total Gross Scope 1 & 2 GHG emissions** 1.011 t CO2 eq